

A  
W  
R  
A  
D



مركز العالم العربي للبحوث والتنمية  
Arab World For Research & Development

2008 18 :

2008 8-6 :

/ 1200 :

%3 ± :

00970-2-2950957/8 :

[awrad@awrad.org](mailto:awrad@awrad.org) :

[www.awrad.org](http://www.awrad.org) :



11

6  
( )



		:	
		.1	
		-	
	%46		-
		%27	-
(%30)			-
	%25		-
		%19	-
			-
	(%61)		-
		%30	-
		%56	-
	(%36)		-
			-
	(%30)	(%46)	-
	(%52)		-
%50	(%57)		-
	(%42)		-
		.2	
		-	
	%12		%10
	(%52)		-
		%26	-
(%49)		%58	-

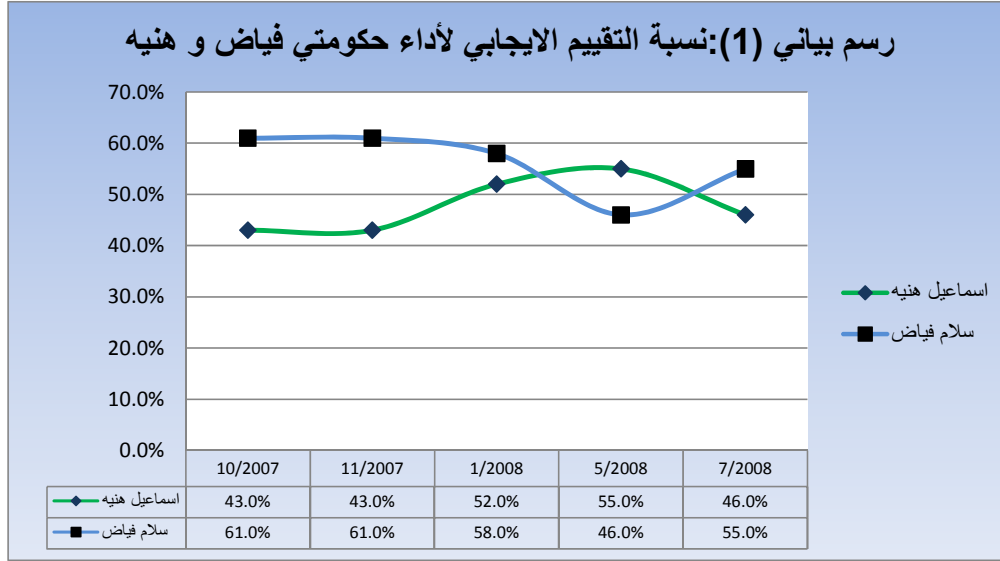
	%81					-
%7	.		%12			
		%42				-
%43	.		%15			
				%46		-
				%49		
			:			<b>.3</b>

	%55	%59	%63			
.%55	%66		%67	2007		
					:	
	%33				%34	-
				%28		-
					:	
	%28		%33			-
		%46				-
				%25		
				:		<b>.4</b>

		%55	2008	%46		-
%55						-
			%46	2008		-



2008 %37  
 %38 %44 %46



)

.(

:

%62

%42

:

%47

%32

:

%44

%31

:

%56

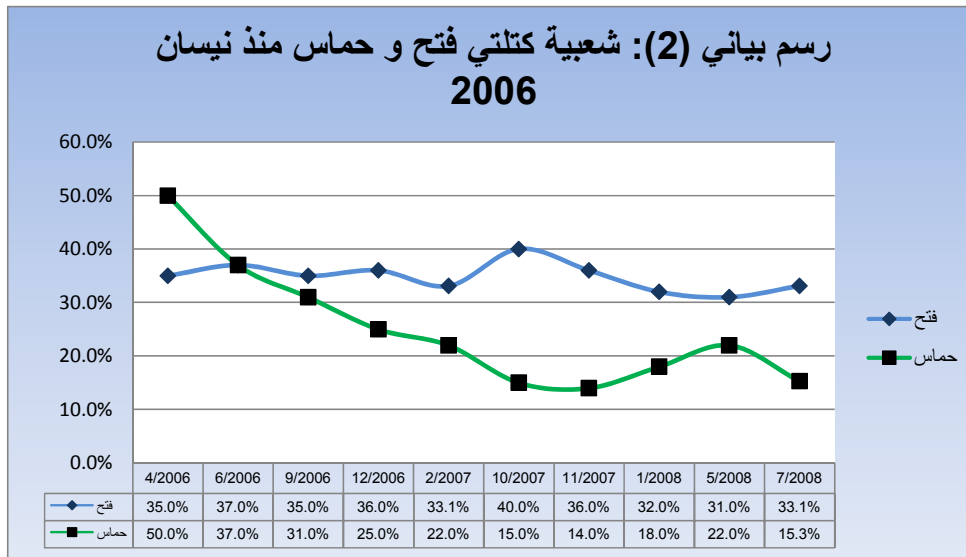
%67



(%3)

:

2006  
2008 6 %53  
8 %29  
. %35 %52  
. %25 %54  
%3  
. %16



:

.7

( 3 ) ( )



: \_\_\_\_\_

(%40) (%60)

%25 (%37) 12

) . %38 (

.(%40 %60

(%30) (%70)

) .%21 %50

%70 (%29)

.( %30

(%46) (%54)

.%27 %32

) . 11

.(%46 %54

(%40) (%60)

.%25 %37

) .

.( %40 %60

(%44) (%56)

. 7

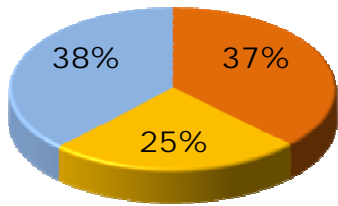
. %44 %56

(%17) (%83)

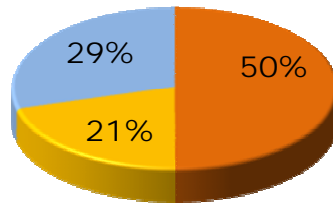
. 44

.%17 %83

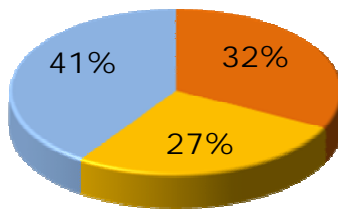
(%41) (%59)  
 %33 10  
 (%30) (%38) %23  
 %41 %59  
 ( ) : (3)



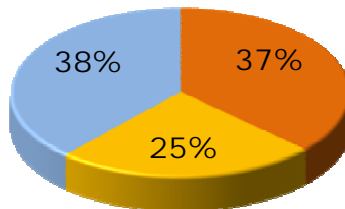
محمود عباس  
 اسماعيل هنية  
 لا أعرف



مروان البرغوثي  
 اسماعيل هنية  
 لا أعرف



سلام قياض  
 اسماعيل هنية  
 لا أعرف



مصطفى البرغوثي  
 اسماعيل هنية  
 لا أعرف

(%23)

(%32)

(%45)

\*

%32

%23

%45

(%12)

(%29)

(%59)

\*

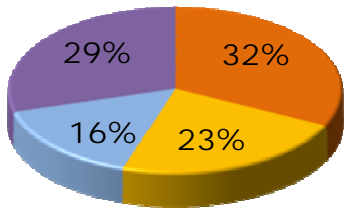
%29

%59

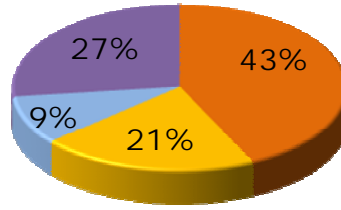
.%12

( )

: (4)

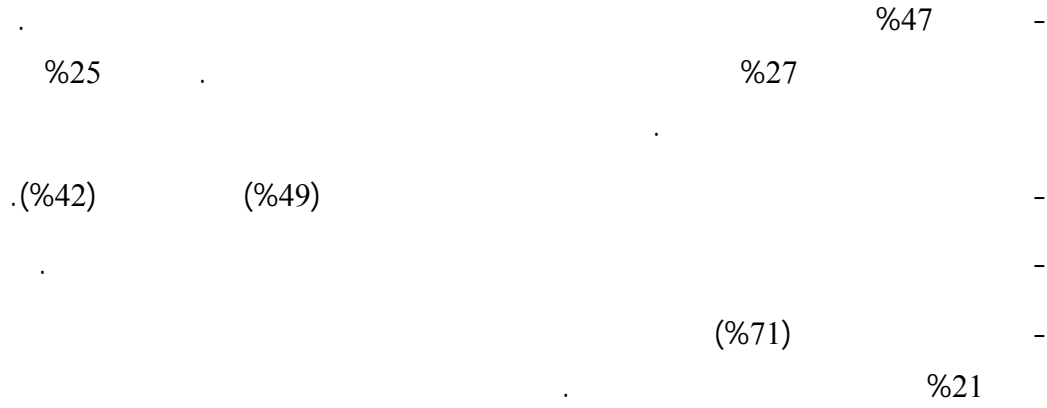


محمود عباس  
اسماعيل هنية  
مصطفى البرغوثي  
لا اعرف

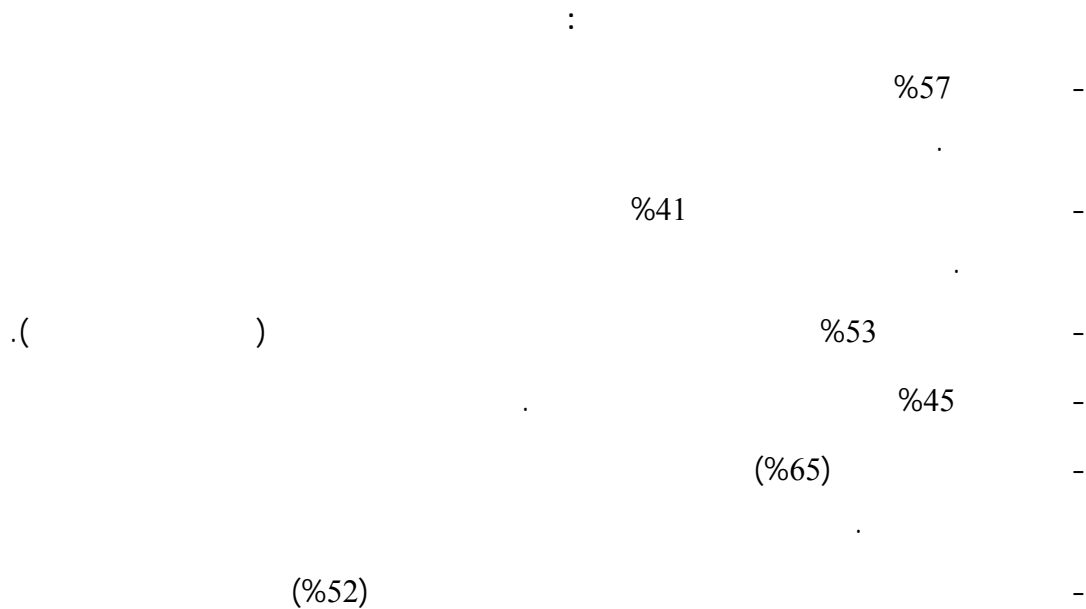


مروان البرغوثي  
اسماعيل هنية  
مصطفى البرغوثي  
لا اعرف

8.



9.



	(%59)	-
	%12	
		%20
		%37
%20		%34
		:
		<b>.10</b>
.2007		-
		%92
		-
12		-
12		%26
		%64
	(%76)	-
	%21	
	(%64)	-
		%30
	(%63)	-
	%34	



2008 18 :

2008 8-6 :  
/ 1200 :  
% 3 ± :

.1

45.1	46.4	45.9	
22.8	16.1	18.6	
30.1	25.3	27.1	
2.0	12.2	8.4	/

/ .2

64.3	59.6	61.3	
31.9	29.1	30.2	
3.8	11.3	8.5	/

.3

56.8	49.5	52.2	
41.8	41.4	41.5	
1.3	9.2	6.3	/

.4

46.2	29.8	35.9	
51.8	58.0	55.7	
2.0	12.2	8.4	/

.5

10.7	9.8	10.2	
12.3	11.4	11.8	
19.2	30.2	26.1	
57.7	48.5	52.0	

32.8	26.1	28.6	
23.2	28.5	26.5	
41.5	31.9	35.5	
2.5	13.6	9.4	/

34.6	23.7	27.8	
24.3	29.0	27.3	
38.4	33.6	35.4	
2.7	13.7	9.6	/

33.3	18.9	24.3	
19.4	22.7	21.5	
46.0	41.9	43.4	
1.3	16.5	10.8	/

36.8	32.0	33.8	
18.5	33.9	28.2	
44.2	25.4	32.4	
0.4	8.6	5.6	/

28.1	28.1	28.1	
19.9	32.2	27.6	
45.8	25.4	33.0	
6.3	14.4	11.3	/

.7

37.5	31.9	34.0	
24.6	31.4	28.8	
37.7	31.8	34.0	
0.2	4.9	3.2	/

34.4	26.3	29.3	
24.6	33.0	29.8	
40.2	30.2	33.9	
0.9	10.5	6.9	/

41.5	24.7	31.0	
19.4	26.2	23.7	
38.6	39.1	38.9	
0.4	10.0	6.4	/

.8

13.2	10.2	11.3	
17.4	20.9	19.6	
69.4	58.0	62.3	
.0	10.9	6.8	/

22.1	13.3	16.6	
32.8	22.7	26.5	
44.9	48.9	47.4	
0.2	15.0	9.5	/





28.8	18.1	22.1	
27.2	23.9	25.2	
44.0	44.4	44.3	
.0	13.6	8.5	/

9.6	5.5	7.0	
15.4	15.4	15.4	
74.1	65.5	68.7	
0.9	13.6	8.8	/

18.8	12.8	15.0	
22.3	19.7	20.7	
56.5	52.0	53.7	
2.5	15.6	10.7	/

24.1	15.3	18.6	
19.0	18.1	18.4	
54.7	50.7	52.2	
2.2	16.0	10.8	/

42.0	11.4	22.8	
16.3	16.6	16.5	
41.7	60.4	53.4	
.0	11.6	7.3	/



37.9	9.0	19.8	
17.6	17.0	17.3	
44.4	62.5	55.8	
.0	11.4	7.2	/

22.8	9.2	14.3	
16.1	10.2	12.4	
59.8	67.2	64.4	
1.3	13.4	8.9	/

.9

32.9	18.5	23.9	
23.9	33.0	29.6	
42.5	41.5	41.9	
0.7	6.9	4.6	/

30.4	28.1	28.9	
28.3	35.9	33.1	
39.3	27.4	31.8	
2.0	8.6	6.2	/

37.7	30.9	33.4	
26.3	33.2	30.7	
34.8	28.1	30.6	
1.1	7.8	5.3	/

21.2	10.8	14.7	
21.0	25.3	23.7	
56.9	56.3	56.5	
0.9	7.7	5.2	/

25.7	20.7	22.6	
23.7	32.2	29.0	
46.4	35.8	39.8	
4.2	11.3	8.7	/

31.8	15.4	21.5	
21.5	27.5	25.3	
45.0	44.9	45.0	
1.8	12.1	8.3	/

21.2	16.8	18.4	
23.4	30.0	27.5	
54.2	45.7	48.9	
1.1	7.6	5.2	/

19.0	15.4	16.8	
23.9	28.6	26.9	
56.3	47.9	51.0	
0.9	8.0	5.3	/

13.2	8.3	10.1	
20.8	14.1	16.6	
64.3	68.2	66.7	
1.8	9.5	6.6	/

.10

21.2	14.4	16.9	
34.6	34.6	34.6	
41.1	41.9	41.6	
3.1	9.1	6.8	/

:

.11

74.3	59.0	64.7	
4.9	9.2	7.6	
2.0	5.5	4.2	
17.4	19.8	18.9	
1.3	6.5	4.6	/

.12

76.1	60.4	66.3	
3.1	10.5	7.8	
1.8	5.2	3.9	
17.6	17.3	17.4	
1.3	6.6	4.7	/

.13

0.9	0.9	0.9	) (
2.7	3.3	3.1	) (
1.3	2.7	2.2	) (
0.7	0.1	0.3	( )
0.4	1.2	0.9	( )
20.5	12.1	15.3	( )
.0	0.3	0.2	( )
0.4	1.3	1.0	( )
0.4	0.1	0.3	
0.2	0.3	0.3	) .(
35.7	31.6	33.1	
1.3	0.4	0.8	
.0	0.9	0.6	
12.1	20.0	17.0	
23.2	24.8	24.2	

....

.14

62.5	50.3	54.9	
11.6	10.5	10.9	
5.6	14.8	11.3	
20.3	24.4	22.9	

....

.15

40.6	35.3	37.3	
31.3	21.0	24.9	
7.1	14.9	12.0	
21.0	28.8	25.9	



.16

....

27.2	16.9	20.8	
52.0	48.7	50.0	
6.3	12.6	10.3	
14.5	21.7	19.0	

.17

....

36.8	29.7	32.4	
32.4	24.1	27.2	
7.6	15.4	12.5	
23.2	30.8	27.9	

.18

....

37.9	36.0	36.7	
31.9	20.2	24.6	
9.6	15.3	13.2	
20.5	28.5	25.5	

.19

....

51.6	43.8	46.7	
23.7	17.6	19.8	
4.7	13.7	10.3	
20.1	24.9	23.1	

.20

....

37.5	30.1	32.9	
26.3	21.3	23.2	
7.6	17.6	13.8	
28.6	31.0	30.1	

.21

....

30.6	24.5	26.8	
37.5	31.6	33.8	
6.5	14.7	11.6	
25.4	29.2	27.8	

.22

....

13.6	17.1	15.8	
35.0	30.3	32.1	
28.8	19.2	22.8	
6.7	13.9	11.2	
15.8	19.5	18.1	

.23

....

26.8	17.5	21.0	
7.8	10.4	9.4	
46.0	41.6	43.2	
5.1	13.1	10.1	
14.3	17.5	16.3	

.24

23.0	19.7	20.9	
73.4	69.5	71.0	
3.6	10.8	8.1	/

.25

41.3	18.9	27.3	
16.5	30.4	25.2	
42.0	49.7	46.8	
0.2	1.1	0.8	/

( ) :

.....

.26

37.2	
19.7	
41.0	
2.1	/

( )

.27

27.6	
25.3	
45.0	
2.1	/

.28

19.4	
64.7	
15.8	/

.29

27.7	
52.9	
19.4	/

.30

58.7	
11.6	
22.4	
7.3	/



.31

37.3	
20.0	
34.4	
8.3	/

( ) :

.32

42.9	
15.4	
41.7	
42.9	/

.33

6.7	
12.1	
80.8	
0.4	

.34

46.2	
48.9	
4.9	



:

.35

(2007 )

3.3	5.9	4.9	
96.4	89.5	92.1	
0.2	4.7	3.0	

**2007**

.36

3.6	7.1	5.8	
96.2	87.2	90.6	
0.2	5.7	3.7	

**12**

.37

36.2	19.3	25.6	
60.5	66.1	64.0	
3.3	14.5	10.4	/

21.7	20.8	21.1	
77.2	74.7	75.6	
1.1	4.5	3.3	/

.38

67.8	59.7	62.7	
32.2	35.7	34.4	
.0	4.5	2.8	/

.39

38.2	25.1	30.0	
59.8	66.0	63.7	
2.0	8.9	6.3	/



2008 18 :

2008 8-6 :

/ 1200 : \*

3 ± :

(%)		(%)		(%)	
43.5		38.7		62.7	
56.5		35.6	/	37.3	
(%)		25.7		(%)	
29.9		(%)		5.3	
46.7		50		4.0	
23.4		50		2.7	
(%)		(%)		9.3	
29.9	9 )	23.7	/	1.3	
	(	70.9	/	2.7	
37.6	12-9)	5.4		8.0	
	(	(%)	/	10.7	
32.4	)	8.6		1.3	
	( 12	14.4		2.7	
(%)		1.2		14.7	
39.7	30-18	4.1		6.7	
41.8	40-31	0.6		13.3	
18.4	40	3.8		5.3	
(%)	( )	13.5		8.0	
13.7		38.1		4.0	
53.1	متوسط	12.3			
33.1	ضعيف	2.7			